

## Topic: A1784 Correct Fitment

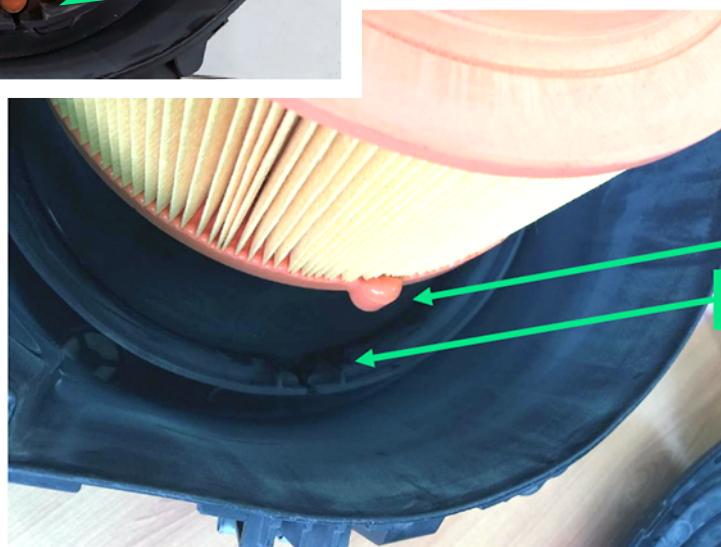
When Removing and replacing the air filter on a Ford Ranger or Mazda BT-50 from 2011 onwards, extra care has to be taken to ensure the filter is sitting properly and performing as intended.

The filter has been designed with a locating tab on one side at the bottom of the filter that requires to be accommodated in the groove inside the air filter housing. If it is incorrectly fitted, and the tab is not sitting in the groove, the filter will not seal correctly allowing unfiltered air to go into the engine causing premature wear and costly repairs.

Make sure every time the filter is replaced that it is sitting evenly flat and that the locating tab is in the right place. Refer to images below.



TAB IN GROOVE FITTED CORRECTLY



LOCATING TAB

GROOVE IN HOUSING



### AUSTRALIA

GUD Automotive Pty Ltd  
29 Taras Avenue, Altona North  
Victoria 3025 Australia.  
[www.rycofilters.com.au](http://www.rycofilters.com.au)

### NEW ZEALAND

GUD Automotive - A division of GUD (NZ) Holdings Limited  
626A Rosebank Road Avondale  
Auckland, New Zealand  
[www.ryco.co.nz](http://www.ryco.co.nz)

### SOCIAL NETWORKS

Facebook: <http://facebook.com/rycofilters>  
YouTube: <http://youtube.com/rycofilters1>  
Twitter: [http://twitter.com/Ryco\\_Filters](http://twitter.com/Ryco_Filters)